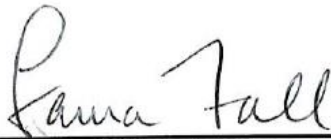


## SHA Master Plan: Landscaping

Contact: [landscapechair@stonehursthoa.com](mailto:landscapechair@stonehursthoa.com)

This Master Plan, and the associated slideshow, outlines community landscape enhancements over a ten year cycle. The Landscape Chair may adjust the schedule, provided that all areas are improved within 10 years. The Landscape Chair will work with a contractor to develop work orders with detailed drawings and plant lists as needed for specific projects. The scope includes trees and large shrubs on common property (~267 as of [2020 inventory](#)); the intent is to replace trees as needed with the same or similar native species that are suited to the site and growing conditions. The schedules for tree maintenance and erosion control are separate and based on condition. The plan may be revised in the future and resubmitted to the Board for approval.

### Approval



12-15-20

---

Laura Fall, 2020 SHA President

Date

On behalf of the 2020 SHA Board Members present (unanimous): Jack Buckley, Julia Jennings, Tanja Kuhlmeier, Lisa Lofton, Ric Roca, Carrie Shannon, and Matthew Sunkin

**Attest:** Joseva Eanes, SHA Secretary

### References

Native Plants for Northern Virginia – best single reference

<https://www.novaregion.org/DocumentCenter/View/10615/Northern-Virginia-Native-Plant-Guide---FINAL>

Native Plants for Erosion Control

<https://www.fairfaxcounty.gov/soil-water-conservation/drainage-problem-plant-list/>

Deer Resistant Native Plants List

<https://extension.umd.edu/hgic/topics/deer-resistant-native-plants-list>

Tried and True Plant Selections for the Mid-Atlantic

<https://mgmv.org/plants/perennials/>

The Green Book for the Buffer (includes detailed garden plans)

[https://dnr.maryland.gov/criticalarea/Documents/GreenBook\\_Buffer.pdf](https://dnr.maryland.gov/criticalarea/Documents/GreenBook_Buffer.pdf)

Public Facilities Manual Chapter 12 – Tree Conservation

<https://www.fairfaxcounty.gov/landdevelopment/sites/landdevelopment/files/assets/documents/pfm/chapter12.pdf>

Casey Trees Urban Tree Selection Guide

<https://caseytrees.org/wp-content/uploads/2017/04/150715-Urban-Tree-Selection-Guide-reduced-size.pdf>

## SHA Master Plan: Landscaping

Contact: [landscapechair@stonehursthoa.com](mailto:landscapechair@stonehursthoa.com)



Stonehurst Homeowners Association (SHA) is a community of 242 townhomes on ~28 acres, with ~7.8 acres of lawn to maintain.

It borders Stonehurst IV (SHIV), with 66 townhomes on ~6 acres.

The shared entrance is at Stonehurst Drive and Arlington Boulevard (Route 50) in Fairfax, VA.

SHA also maintains ~2 acres of lawn and wood chips for the playground on land behind Barnard Court that is owned by Fairfax County Public Schools (FCPS); residents have right of use.

### Vision

Landscaping complements the Colonial Williamsburg architecture, using a mixture of native and exotic trees, shrubs, and small perennials to add visual interest and support healthy habitat.

### Goals

- Create an updated colonial style with a mix of old-fashioned favorites and natives
- Define common areas – edge and limit plantings inside common walks close to houses
- Create four season interest and add more evergreens for screening and habitat



*Playground area on FCPS land includes four raised beds with two sets of swings, horses, and a jungle gym*

## SHA Master Plan: Landscaping

Contact: [landscapechair@stonehursthoa.com](mailto:landscapechair@stonehursthoa.com)

### Approach

[Plant NOVA Natives](#) is a joint campaign of a coalition of non-profit, governmental, and private groups working to reverse the decline of native plants and wildlife in Northern Virginia. Homeowners associations have the opportunity to create spaces where people thrive side-by-side with the environment, given the common land we manage and the influence we have over landscaping practices by residents.

Plant NOVA Natives Recommended Community Actions:

- Create landscaping policies:
  - Set goal that [at least 70%](#) of plantings on common land will be Virginia native
  - No [invasive plants](#) installed on common land, no broadcasting insecticides on common land (unless specific hazard), and minimize use of other chemicals
  - Create a **suggested plant list** (see last page)
- Establish multi-year plan for planting, invasive control, and tree replacement:
  - Improve storm water capture
    - Improve the buffer in the Resource Protection Area (RPA) for Hunters Branch
    - Retrofit storm drain areas with native plants (talk to NVSWCD)
    - Use fences/edging to prevent accidental mowing of naturalized areas
  - Add more plant layers to common area beds, such as:
    - Understory flowering trees as accents along the perimeter
    - Shrub groupings (such as native azalea and blueberry) and
    - Groundcover borders (sedges and ferns) to capture leaves and hide them in place reducing need for removal and supplemental mulching
- Establish grounds maintenance contract with instructions to leave fallen leaves in place where possible and use mulching lawn mowers to reduce need for fertilizer.
- Achieve buy-in from homeowners and residents through community relations:
  - Demonstration garden with water source (rain barrel) **and interpretive signs** (to add) in the SHA Recreation Site, a **certified Wildlife Habitat as of 2017**
  - Talks and walks with Northern Virginia Soil and Water Conservation District (NVSWCD), Audubon at Home (A@H), others
  - Articles in newsletter
  - Encourage residents to keep cats indoors and guard against other unintended wildlife hazards like window collision, light and noise pollution, and pest bait

### Ten Year Cycle

In 2019, SHA reached its 50 year anniversary and established a ten year cycle to review and improve plantings in common areas, as follows:

- Year 1-2: Entrance (shared cost 78.6% SHA : 21.4% SHIV)
- Year 3: Arlington and Stonehurst
- Year 4: Lindenwood and Graceland
- Year 5: Annhurst, Fairbury, Marycrest, Cantrell, and Hartwick
- Year 6: Bailey
- Year 7: Barnard and Clanbrook
- Year 8-10: SHA Recreation Site and RPA



**SHA Master Plan: Landscaping**  
Contact: [landscapechair@stonehursthoa.com](mailto:landscapechair@stonehursthoa.com)



*Credit: old photos shared by Kim Burkle and Tom Pyron*



*Credit: 2020 photos by Matthew Sunkin*

## SHA Master Plan: Landscaping

Contact: [landscapechair@stonehursthoa.com](mailto:landscapechair@stonehursthoa.com)

Entrance (shared cost 78.6% SHA : 21.4% SHIV)



Site Survey (approved by both SHA and SHIV Boards in 2019)

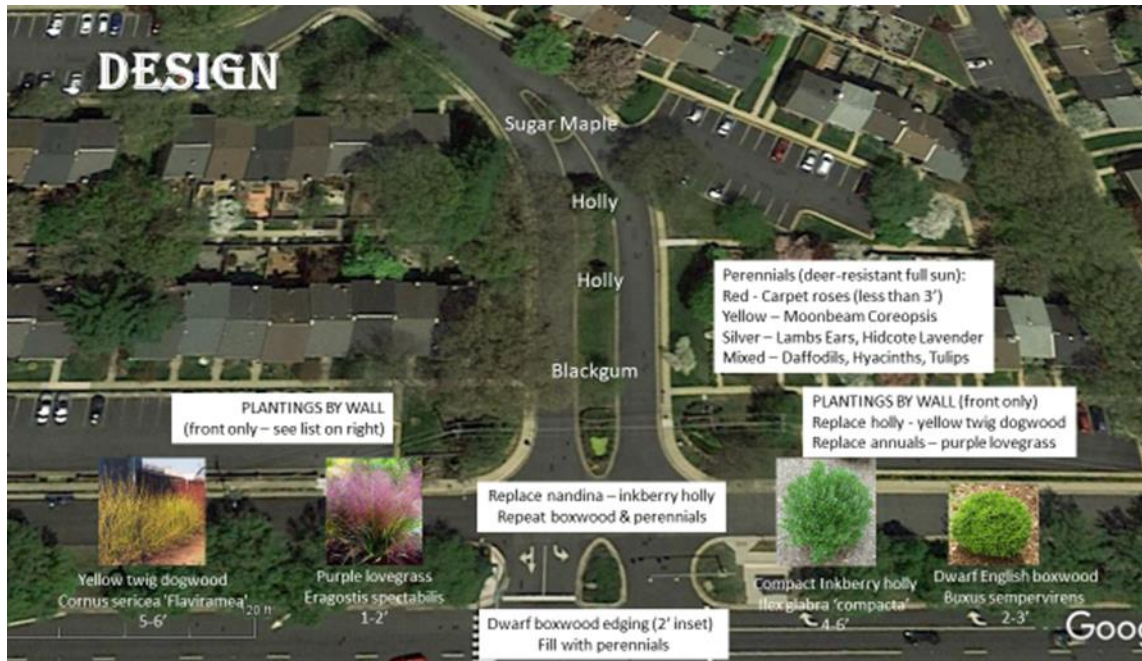
- 4 trees in the center median behind the flag pole: 1 blackgum; 2 holly, 1 sugar maple
- Water source: SHA-funded spigot located behind center median brick wall
- Two center median beds and two side beds in front of brick walls facing Route 50
- Full sun, drought-tolerant conditions
- Overgrown compacta holly in center median next to Route 50 block sight lines for traffic
- Nandina flanking center median with flagpole are invasive/fast growing
- Knockout roses and barberry in center median with flagpole are dead
- Annuals are high maintenance and predictable—don't set Stonehurst apart
- Shrubs behind yews in side beds (holly and barberry) are overgrown and dying
- Groundcovers (liriope, ivy, vinca) and large shrubs (viburnum) are acceptable for now



# SHA Master Plan: Landscaping

Contact: [landscapechair@stonehursthwa.com](mailto:landscapechair@stonehursthwa.com)

Design (approved by both SHA and SHIV Boards in 2019)



Installation (2020)





## SHA Master Plan: Landscaping

Contact: [landscapechair@stonehursthoa.com](mailto:landscapechair@stonehursthoa.com)

### Arlington Boulevard (9 homes)

#### Site Survey (2020)

- Planting bed by 9242: full sun to part shade and protected behind wall with overgrown viburnum and ivy, two trees by guy wires; overgrown holly by parking, erosion
- Arlington trees (12): 5 Bla = blackgum; 5 Dog = dogwood; 2 Wo = willow oak; ~~1 blackgum and 1 bradford pear by guy wires~~
- Route 50 median trees (17): VDOT owns, SHA maintains in accordance with [state law](#); austrian pine, 2 dogwood, 14 bradford pear; little screening; does not mirror SHIV side

#### Design

- Planting bed by 9242: ~~remove trees by guy wires~~; ~~replace~~ holly by parking with [dogwood](#), reseed, remove overgrown viburnum and ivy; repeat [inkberry holly](#) and [yellow twig dogwood](#) from entrance; add [smooth hydrangea](#) and sedge
- Address erosion along sidewalk by service road – grass/groundcover for full sun
- Route 50 median: replace invasive pear trees with [Carolina silverbell](#) (VDOT approved), and underplant with shrubs for screening (e.g., holly and [winterberry](#))

#### Installation (2020)



*bed by 9242 Arlington, before (above) and after (below 2022)*





**SHA Master Plan: Landscaping**

Contact: [landscapechair@stonehursthoa.com](mailto:landscapechair@stonehursthoa.com)

**Stonehurst Drive (13 homes)**

Site Survey (2020)

- Planting bed by 3195: runoff, part sun, steep slope, invasives
- Planting boxes behind 3193/95 (and entire alley): runoff, full sun, invasives
- Stonehurst trees (16): 1 ced = eastern redcedar; 2 Che = cherry; 3 Dog = dogwood; 2 Hol = holly; 2 Jm = japanese maple; 1 Plum; 1 Rm = red maple; 2 Smag = saucer magnolia; 2 Wo = willow oak
- Stonehurst is short 3 unassigned parking spaces: 10 spaces for 13 homes (0.77:1). It would be very difficult to add spaces. Use overflow parallel parking on Stonehurst Drive.

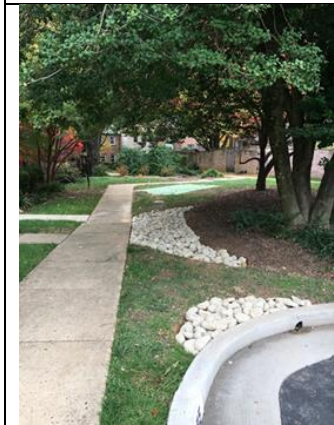
Design

- Planting bed by 3195: azalea, forsythia, spirea, hosta, liriope, ivy, vinca; added [spicebush](#) and [mapleleaf viburnum](#) in 2017 (removed invasives in 2020)
- Erosion control: added rock by sidewalk and slope and removed dying dogwood in 2018
- Planting boxes behind 3193/95 (azalea, holly, ferns, hosta; removed porcelain-berry vine and added [blue rug juniper](#) in 2020)

Installation (2020)



*bed by 3195 Stonehurst*



*erosion control*



*erosion control*



*boxes behind 3193/95 Stonehurst*



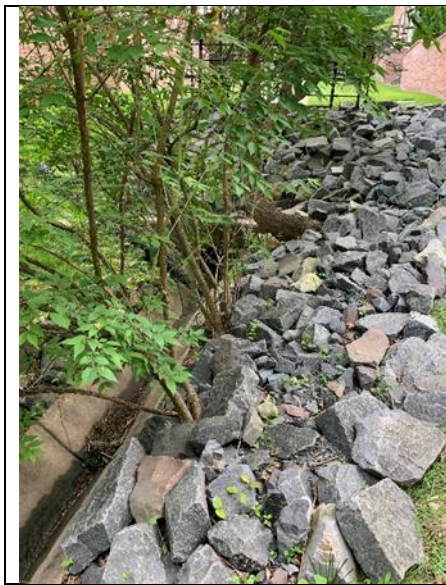
## SHA Master Plan: Landscaping

Contact: [landscapechair@stonehursthoa.com](mailto:landscapechair@stonehursthoa.com)

### Lindenwood Lane (26 homes)

#### Site Survey (2020)

- Dense shade in areas along street makes it difficult to grow grass
- Planting bed by 3191: erosion, part sun, needs more screening from Route 50
- Planting bed by 3141: storm drain, slope, part shade/full sun, needs updating
- Plantings by rear sidewalk (trees, forsythia, azalea, crape myrtle and [lilae mock orange](#))
- Drainage culvert behind 3177: no erosion issues
- Lindenwood trees (29): 1 be = Boxelder; 4 ced = Atlantic cedar; 13 Che = cherry; 1 dog = dogwood; 1 ds = downy serviceberry; 1 Hol = holly; 3 mul = Mulberry; 1 ns = Norway Spruce; 2 Po = pin oak; 1 Rib = river birch; 1 tp = tulip poplar



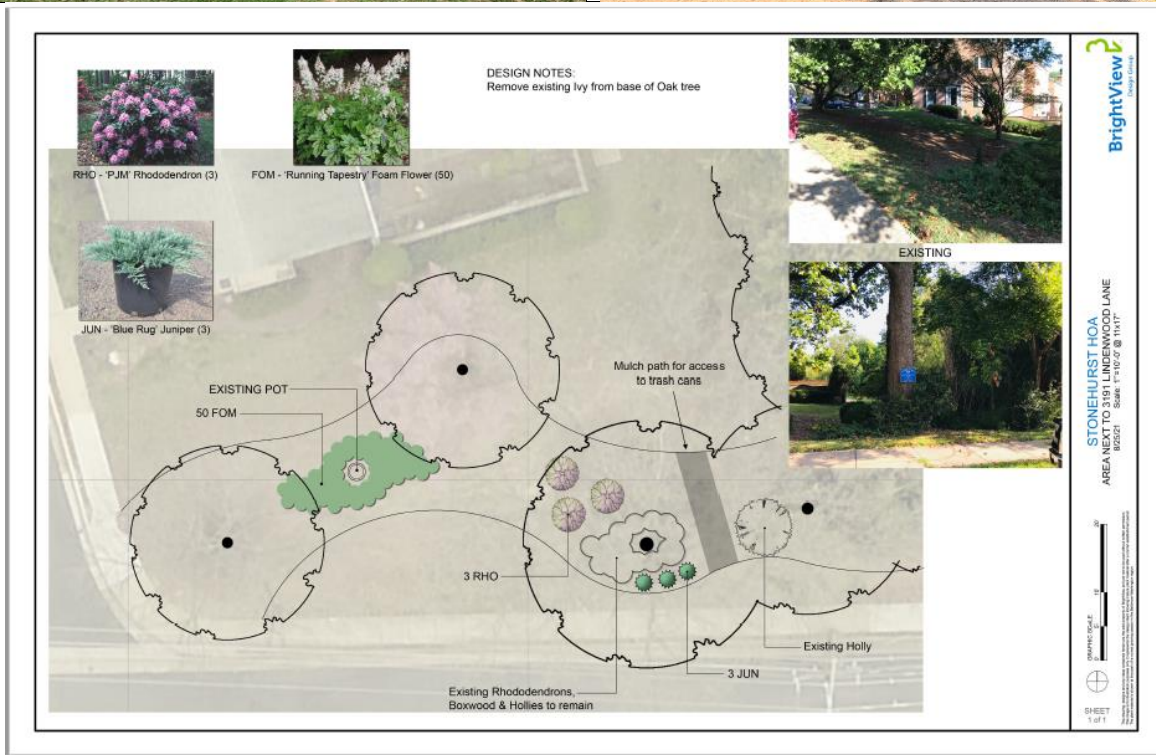
*behind 3177 Lindenwood*

#### Design

- Planting bed by 3191: existing azalea, boxwood, dogwood, rhododendron; added holly and expanded mulch bed to control erosion in 2020; remove ivy and add [rhododendron](#) for screening, [foamflower](#)
- Remove overgrown day lilies across from 3185
- Planting bed by 3141: remove overgrown compacta holly and roses; add [inkberry holly](#), [summersweet](#); [buttonbush](#) and [little bluestem](#) by storm drain
- Plan to replace pin oak by 3155 [with dogwood \(more light\)](#) and pin oak by 3151 with river birch (biodiversity)
- Drainage culvert: add rock as needed and native grasses
- Planting border behind houses: consider gradually adding river birch [and fringe trees](#); [plant cherry trees in more prominent locations](#)

#### Installation (2021-2022)

**SHA Master Plan: Landscaping**  
 Contact: [landscapechair@stonehursthoa.com](mailto:landscapechair@stonehursthoa.com)



*bed by 3191 Lindenwood before (top), design (middle), and after (bottom)*





*bed by 3141 Lindenwood (above) and plantings by rear sidewalk (below)*





## SHA Master Plan: Landscaping

Contact: [landscapechair@stonehursthoa.com](mailto:landscapechair@stonehursthoa.com)

### Graceland Place (20 homes)

#### Site Survey (2020)

- Planting bed by 9201: full sun, steep slope, no separation between common area and private property. In 2008, SHA allowed a previous owner to replace 4 pine trees and ivy with smaller trees (Japanese maple and crape myrtle), sod, and ground cover. Owners maintained at their expense until the Landscape Chair intervened in 2020.
- Graceland trees (27): 2 Che = cherry; 7 cm = crape myrtle; 5 Dog = dogwood; 1 Hem = hemlock; 3 Hol = holly; 1 jm = japanese maple; 2 Mag = southern magnolia; 2 Rm = red maple; 1 ds = [downy serviceberry](#); 3 Wo = willow oak
- Graceland is short 5 unassigned parking spaces: 15 spaces for 20 homes (0.75:1). [It would be very difficult to add spaces.](#) Use overflow parallel parking on Annhurst.



[Graceland parking island with “T” shaped ends](#)

#### Design

- Planting bed by 9201: talked to owner 5/24/20; edged property line and removed some crape myrtle in 2020; add blue rug juniper within 8’ of curb (leave liriopse on corner); add [serviceberry](#) and summersweet; [reduce](#) daylilies [with yellow indigo and little blue stem](#)
- Remove forsythia [and dogwood when dead at same time \(avoid root damage\)](#) in parking island by 9207. Plant shrubs, not trees, in smaller “T” ends of parking island.
- Add groundcover to slope under magnolia and oak trees.
- Gradually replace dogwood [and japanese cherry](#) in full sun with [serviceberry or redbud](#)



**SHA Master Plan: Landscaping**

Contact: [landscapechair@stonehursthoa.com](mailto:landscapechair@stonehursthoa.com)

Installation (2021 – 2022)

Existing Variegated Linope to remain  
Removes weeds and ivy

12 CLT  
13 LBS  
12 IND  
1 AML  
12 JUN

**DESIGN NOTES:**  
Remove 5 existing Crape Myrtles.  
Remove all Daylilies, Roses, weeds & other vegetation from area.  
Existing Variegated Linope to remain.  
Topdress area with 4" mulch.  
All work will be within common area and not to extend past property line into residential property.

JUN - 'Blue Rug' Juniper (12)

AML - Amelanchier (1)

IND - Yellow Indigo (12)

CLT - 'Ruby Spice' Clethra (12)

LBS - Little Blue Stem Grass (13)

**BrightView**  
Design Center

**STONEHURST HOA**  
CRAPE MYRTLE REMOVAL AND LANDSCAPING  
SCALE: 1" = 10' & 1/2"

DATE: 06/2020

SHEET 1 of 1



*bed by 9201 Graceland, before and design (top), in progress (2021, bottom)*

## SHA Master Plan: Landscaping

Contact: [landscapechair@stonehursthoa.com](mailto:landscapechair@stonehursthoa.com)

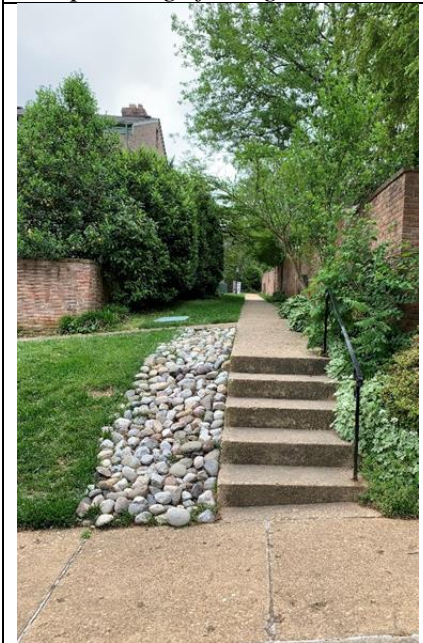
### Annhurst Street (19 homes)

Site Survey (2020)

- Plantings on slope behind 9208-9222 Graceland facing Annhurst: erosion, full to part sun
- Annhurst trees (16): 1 Che = cherry; 1 Dog=dogwood; 5 holly; 1 Po = pin oak; 5 Rm = red maple; 3 Wo = willow oak



*plantings facing Annhurst (above) and erosion control behind 9222 Graceland (below)*



#### Design

- Plantings on slope behind 9208-9222 Graceland facing Annhurst: row of holly flanked by red maple; multiflora rose and lilac (need sun); added [grow-low sumac](#) under dogwood in 2017 (add some under red maple behind 9222); remove ivy, remove [lilac euonymus](#) by electrical box; [plan to replace willow oak on corner by 9200 with redbud \(more light and biodiversity\)](#)
- Erosion control: added river rock next to steps behind 9222 Graceland in 2017

Installation – Pending



## SHA Master Plan: Landscaping

Contact: [landscapechair@stonehursthoa.com](mailto:landscapechair@stonehursthoa.com)

### Fairbury Lane (10 homes)

Site Survey (2020)

- Planting bed by 3151: part shade, needs updating
- Island beds of forsythia, spirea, and privet (some on SHIV property)
- Fairbury trees (13): 1 Bas = basswood; 1 bla – blackgum; 1 Bs = blue spruce; 1 Che = cherry; 1 hol = holly; 5 Ro = red oak; 1 So = scarlet oak; 2 Tp = tulip poplar
- Dying Japanese cherry tree in median in front of 3159 affecting sidewalk: Fairbury is short 2 unmarked parking spaces; 8 spaces for 10 homes (0.8:1). **It would be very difficult to add spaces.** Use overflow parallel parking on Annhurst.



*bed by 3151 Fairbury*

### Design

- Planting bed by 3151: (compacta holly, add hydrangea and sedge);
- Considering replacing forsythia with [cherry or-witch hazel](#) and spirea with [beautyberry](#)

Installation - Pending

## SHA Master Plan: Landscaping

Contact: [landscapechair@stonehursthoa.com](mailto:landscapechair@stonehursthoa.com)

### Marycrest Street (14 homes)

#### Site Survey (2020)

- Planting bed by 9303: full sun; overgrown, needs updating
- Erosion under trees in common area by 9318
- Marycrest trees (13): 1 bla = blackgum; 1 Ced = cedar; 3 Dog = dogwood; 1 Mag = Southern Magnolia; 3 Po = pin oak; 2 Rm = red Maple; 2 Ro = red oak; 1 wo=willow oak

#### Design

- Planting bed by 9303: roses; removed daylilies (2020), ~~add oakleaf hydrangea ruby slippers in center and edge with native carex or sedge (competes with roses)~~
- Add hydrangea and groundcover under trees by 9318, connect beds and address erosion
- Consider adding a tree or shrub bed near property corner with SHIV along Stonehurst Drive to mirror the Fairbury side (*complete*)

#### Installation (2021-2022)



*bed by 9303 Marycrest before (above) and after (below)*





## SHA Master Plan: Landscaping

Contact: [landscapechair@stonehursthoa.com](mailto:landscapechair@stonehursthoa.com)

### Cantrell Lane (10 homes)

Site Survey (2020)

- Planting bed by 3140: drainage; removed some forsythia and added river rock in 2018
- Cantrell trees (5): 1 bche = black cherry; 1 Mag = southern magnolia; 1 po = pin oak; 1 Er = Eastern Redbud; 1 sm = sugar maple



*bed by 3140 Cantrell 2018 before (top) and after (bottom)*

### Design

- Planting bed by 3140: **replace** remaining forsythia with **beautyberry** or **buttonbush** to **open view**, consider adding **short section of split rail fence or reflective barrier at end of street** and evergreen hedge on Marycrest side
- **Add American beautyberry or hydrangea flanking redbud tree in the median**

Installation – Pending

## SHA Master Plan: Landscaping

Contact: [landscapechair@stonehursthoa.com](mailto:landscapechair@stonehursthoa.com)

### Hartwick Lane (9 homes)

Site Survey (2020)

- No planting bed
- Hartwick trees (19): 5 Crape Myrtle; 12 Nellie Stevens holly; 2 Po = pin oak



*Hartwick trees facing Stonehurst Drive*

### Design

- Hartwick trees: maintain; consider gradually replacing crape myrtle with [American smoketree](#) and pin oak with scarlet oak

Installation – N/A (Maintain)



## SHA Master Plan: Landscaping

Contact: [landscapechair@stonehursthoa.com](mailto:landscapechair@stonehursthoa.com)

### Bailey Lane (70 homes)

#### Site Survey (2020)

- More than **2.5 times the number of homes** as the next longest street (Lindenwood at 26)
- 9201-9213 and 9288-9298: property line set back from common walk; check plats
- 9201: island bed of holly and lirioppe surround electrical box on common property
- 9299: island bed of nandina surround electrical box on common property
- Planting beds by 9241 and 9283: full sun, runoff; need updating
- Grass medians by 9261 (pin oak removed in 2009) and 9275 (blue spruce removed in 2019): Bailey is short 14 unmarked parking spaces: 56 spaces for 70 homes (0.8:1). It would be very difficult to add spaces. Use overflow parallel parking on Stonehurst Drive.
- 9280: common area in dense shade has erosion issues
- Drainage culvert behind 9283: some erosion
- 9298: beds on common property with no separation from private property (confuses maintenance crew); dense shade, three large trees and 2 crape myrtle on SHA property make it difficult to grow grass; bare soil is prone to erosion
- Bailey trees (45): 2 Cm = Crape Myrtle; 1 Cry = japanese cryptomeria; 6 Dog = dogwood; 1 Eh = Eastern Hemlock; 1 er = eastern redbud; 2 Hol = Holly; 1 Jm = japanese maple; 2 Mag = southern magnolia; 7 Po = pin oak; 2 Rm = red maple; 1 sj = japanese snowbell; 5 Smag = 2 star, 1 saucer, 2 sweetbay magnolia; 1 Sm = sugar maple; 1 swo = swamp white oak; 14 Wo = willow oak





## SHA Master Plan: Landscaping

Contact: [landscapechair@stonehursthoa.com](mailto:landscapechair@stonehursthoa.com)



*bed by 9241 Bailey (above) and 9283 Bailey (below)*



### Design

- Planting beds by 9241 and 9283: complementary designs with saucer or sweetbay magnolia; inkberry or compacta holly; ~~roses~~; remove pachysandra, barberry and pyracantha; add [dwarf ninebark](#), [new jersey tea](#), [hydrangea](#), and [carex bunny blue](#)
- Drainage culvert behind 9283: add rock as needed and native grasses
- Add groundcover and native plants ([wood aster](#) and [ferns](#)) to medians by 9288 and 9289
- By 9298: reduce shade to support grass; make common area design more similar to 9201 (both are end units with two front walks to Bailey and Stonehurst); erosion control project in 2020 (improve granite rock terraces) and add native perennials by alley steps

Installation ([2021](#) – [2022](#))









*bed by 9298 Bailey before (top), in progress (2022, bottom)*





# SHA Master Plan: Landscaping

Contact: [landscapechair@stonehursthoa.com](mailto:landscapechair@stonehursthoa.com)

## Barnard Court (21 homes)

Site Survey (2020)

- ~~Planting bed by 3120: dense shade and runoff~~
- ~~Planting bed by 3100: full sun to part shade~~
- Drainage culvert behind 3130 Barnard: some erosion issues
- Barnard trees (20): 1 Che = cherry; 2 Dog = dogwood; 1 hol = holly; 1 Mag = southern magnolia; 9 Po = pin oak; 4 Wo = willow oak; 2 Wp = white pine



*bed by 3100 Barnard*



*behind 3130 Barnard*

### Design

- ~~Planting bed by 3120 (hosta, liriope, add ferns, coral bells and dwarf sweetpire)~~ (oldest oak in SHA; arborist recommends we do not disturb roots)
- ~~Planting bed by 3100 (pines, underplant with witch hazel and rosebay rhododendron)~~
- Drainage culvert behind 3130: add rock as needed and native grasses

Installation – Pending



## SHA Master Plan: Landscaping

Contact: [landscapechair@stonehursthoa.com](mailto:landscapechair@stonehursthoa.com)

### Clanbrook Court (21 homes)

Site Survey (2020)

- Planting bed by 9300: part shade (added bed and sign in 2019 for 50<sup>th</sup> anniversary)
- Clanbrook trees (16): 4 Dog=dogwood; 1 sj = Japanese Snowbell; 5 Po=pin oak; 4 Sm = sugar maple; 2 Wp = white pine; do not replace dogwood behind 9208; replace pine removed in 2020



*bed by 9300 Clanbrook*

### Design

- Planting bed by 9300 (rhododendron, remove daylilies; add perennials to echo entrance)

Installation – Pending



## SHA Master Plan: Landscaping

Contact: [landscapechair@stonehursthoa.com](mailto:landscapechair@stonehursthoa.com)

### SHA Recreation Site

#### Site Survey (2020)

- Site is naturalized reflecting work since development of adjacent property in 2016; trees and plantings outside the Grove receive limited maintenance
- A@H Certified Wildlife Sanctuary in 2017 based on volunteer efforts
- Deer browse is a challenge
- Grove (with rain barrel) is essentially island bed with mix of native and exotic plants
- Property Line (part shade to full sun) includes woodland plantings ~~and pollinator garden~~
- Swale requires attention every 2-3 years to replace rock; Gully is receding and may require major erosion control project in consultation with NVSWCD and civil engineers
- 13 trees: 1 asp = aspen; 1 bche = black cherry; 7 bl=black locust; 1 che=cherry; 2 japanese maple; 1 tp = tulip poplar



*The Grove*



## SHA Master Plan: Landscaping

Contact: [landscapechair@stonehursthoa.com](mailto:landscapechair@stonehursthoa.com)



### Design

- Reduce size and scope of the approved **volunteer work area** to mitigate risk of changes in appearance that require SHA remediation. Volunteers with written approval from the SHA Landscape Chair may work without supervision. Review annually.
  - ~~Property Line from point opposite trees at bottom of Grove to drop-off. Consider adding stakes or fencing. Part shade to full sun.~~
- Property Line ~~and Approved Unsupervised Volunteer Work Area~~: Part shade. Consider adding evergreens for screening and wildlife. **Remove worst invasives annually.**
- Curb-Cut: Part shade. Edge, mulch, add evergreens for screening.
- Path (right of curb-cut down hill to point opposite trees at bottom of Grove): Part shade. line with pairs of native fruit or berry producing trees and large shrubs to support wildlife (i.e., blackhaw viburnum, redbud, serviceberry, pawpaw, crabapple, sassafras)
- Grove: ~~move log edging to inside rim and along specific beds~~; edge and mulch annually 4-5' wide border around perimeter; add interpretive signs for **demonstration garden**:
  - Shrub Ring. Part Shade. Blackhaw viburnum and witch hazel
  - Bird Bath Garden. Part sun to full shade. Astilbe, Daffodils, Yellow Flag Iris, Lamb's Ears, Hosta, Oakleaf Hydrangea, Catawba Rhododendron, European Smoke bush (coggyria); *remove mugwort (if possible), add [columbine](#), foamflower*
  - Bailey Border. Full sun. Juniper 'grey owl' on slope, Peonies, Pink Thicketleaf Phlox, Japanese Silvergrass 'Cosmopolitan'
  - Stonehurst Border: Part to full shade. Weeping Japanese Maple, Bleeding Hearts, Ferns, Hyacinths, Allium, Geraniums, Lobelia, Sedum. *Remove bishop's weed (if possible), add ferns, rhododendron on slope*
  - Bowl: Part shade to full sun. Indigo bush, golden ragwort.

Installation – Pending



## SHA Master Plan: Landscaping

Contact: [landscapechair@stonehursthoa.com](mailto:landscapechair@stonehursthoa.com)

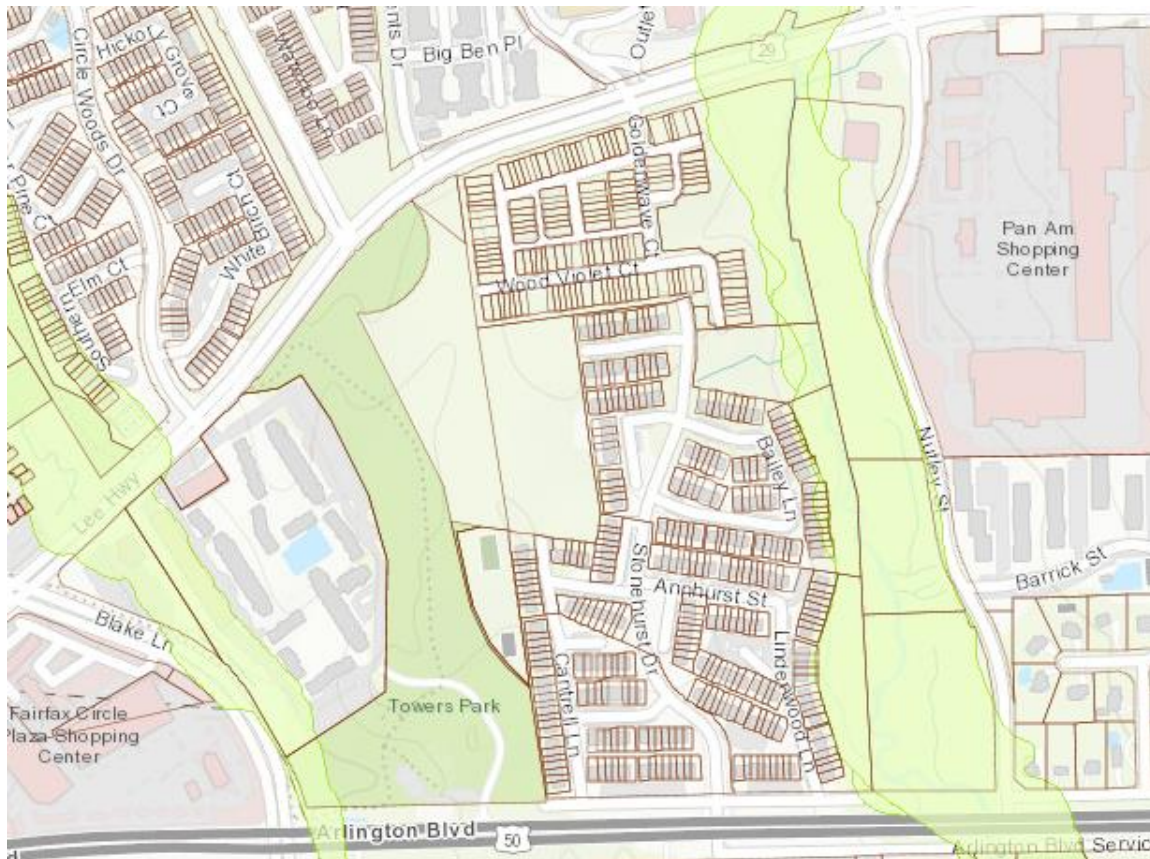
### Resource Protection Area (RPA)

SHA common area includes ~4.2 acres that are in the Chesapeake Bay RPA for Hunters Branch (established in 1993 and highlighted in green on the map below). The three sections include:

- ~2 acres behind 3141-3191 Lindenwood (left and right of drainage culvert)
- ~1.5 acres behind 9243-9281 Bailey (little to no separation from private property)
- ~0.7 acres of the SHA Recreation Site below the drop-off

The strategy is to gradually remove/replace major invasives with natives in sections per [county guidelines](#):

- Stake property line along the RPA and replace 3 existing “No Dumping” signs with 7 “RPA” signs
- Remove major invasives, including:
  - *Porcelain-berry vine*
  - *Running Bamboo* – replace with eastern redcedar hemlock, and [virginia pine](#)
  - *Japanese Honeysuckle (bush)* – replace with viburnum, elderberry, and buttonbush





**Benches**

	
<p>Near 3179 Stonehurst Drive</p>	<p>Behind 3175 Lindenwood</p>
	
<p>Near 3165 Fairbury (Little Free Library)</p>	<p>Near 3151 Fairbury (School Bus Stop)</p>
	
<p>Behind 3140 Barnard (Playground)</p>	<p>Behind 3132 Barnard (Playground)</p>
	
<p>Near 3130 Barnard</p>	<p>Near 3100 Barnard</p>
	<p>Over the years, SHA residents have generously donated and installed benches on common property and county land. Donations require review and approval by the Landscape Committee and the SHA Board. Benches require periodic maintenance by volunteers.</p>
<p>Near 9299 Bailey</p>	



## SHA Master Plan: Landscaping

Contact: [landscapechair@stonehursthoa.com](mailto:landscapechair@stonehursthoa.com)

### SHA Suggested Plant List

The goal is to increase native plants and support wildlife on SHA property.

In the D.C. area, the best trees in terms of supporting birds are native oaks, cherries, willows, elms, and birches. “In 84 percent of the counties in the U.S., native oaks are the most important tree followed by native cherries and native willows,” researcher David Tallamy said. “When you chop these down, you change the area’s ecosystem.” Native oaks support 513 species of caterpillars—important bird food—cherries support 390 species, birches support 321 species, and willows support 316 species.

Instead of this	Plant this	Notes
Pin Oak	Scarlet Oak, BlackGum, River Birch	Try Swamp White Oak or Chinkapin Oak
Black Locust	Black Cherry, Native Willow, Hickory	find place(s) for White Oak in large open areas
Bradford Pear	Serviceberry Carolina Silverbell	
Southern Magnolia	Sweetbay Magnolia	
English Ivy Pachysandra Vinca (Periwinkle)	Virginia Creeper, Blue Rug Juniper Allegheny Pachysandra, Creeping Phlox, Golden Ragwort, Foamflower	
Running Bamboo	Eastern Redcedar, Hemlock (hybrid)	
Japanese Cherry Tree (Yoshino or Kwanzan)	Eastern Redbud	Plant cherries in visible locations (not by RPA)
Forsythia	Witch Hazel Shrubby St John’s Wort Spicebush, Senna	
Privet	Blackhaw Viburnum Red Chokeberry	
Lilac and Japanese Snowbell (fragrant)	Fringe Tree (fragrant) Summersweet (fragrant)	Try Perkins Pink Yellowwood (fragrant)
Liriope	Native Carex and Sedges	
Heavenly Bamboo (Nandina)	Inkberry holly (Ilex glabra) Winterberry (Ilex verticillata)	
Butterfly Bush Crape Myrtle	Summersweet Smoke bush	
Barberry	Ninebark	
Day lilies	False Indigo, Lobelia	