

Stonehurst Homeowners Association (SHA)

CELEBRATING 50 YEARS



SHA was established in 1969-72, with a green belt on 3 sides. The area changed dramatically over time. Landscape enhancements are needed to maintain the beauty and appeal of the neighborhood.

MASTER PLAN

In 2020, the SHA Board approved a plan and budget of \$10,000 per year to update the common areas over ten years.

Vision: Landscaping complements the Colonial Williamsburg architecture, using a mixture of native and non-native plant material to add visual interest and support healthy habitat.

SHA owners can view the Master Plan at <https://stonehursthoa.com/default.asp?id=8> (login required)


DID YOU KNOW?

- Research shows that living near urban parks and green spaces supports health and wellness. It also raises property values.
- Research suggests that it takes at least **70% native** plant biomass to maintain a healthy ecosystem.
- Native plants form symbiotic relationships with native insects over thousands of generations. Many insect populations are in decline – not just butterflies. Insects are critical to the food web.
- 96% of birds in our area eat insects. We've lost ~30% of the bird population in the last 50 years.
- SHA manages 28 acres; we can make a difference.



<https://homegrownnationalpark.org/tallamy/not-in-our-yard-doug-tallamy>

SCHEDULE

- ✓ 2020: Entrance (with SHIV)
- ✓ 2021: Arlington and Stonehurst
- ✓ 2022: Graceland and Lindenwood
-  • 2023: Annhurst, Fairbury, Marycrest, Cantrell, and Hartwick
- 2024: Bailey
- 2025: Barnard and Clanbrook
- 2026-29: Recreation Site and RPA

- The Landscape Chair may adjust the schedule, provided that all common areas are reviewed within 10 years.
- Tree replacement and erosion control projects are budgeted and scheduled separately, based on conditions.
- This spreads investment across the neighborhood.

ANNHURST STREET (19 HOMES)

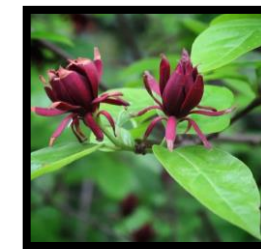
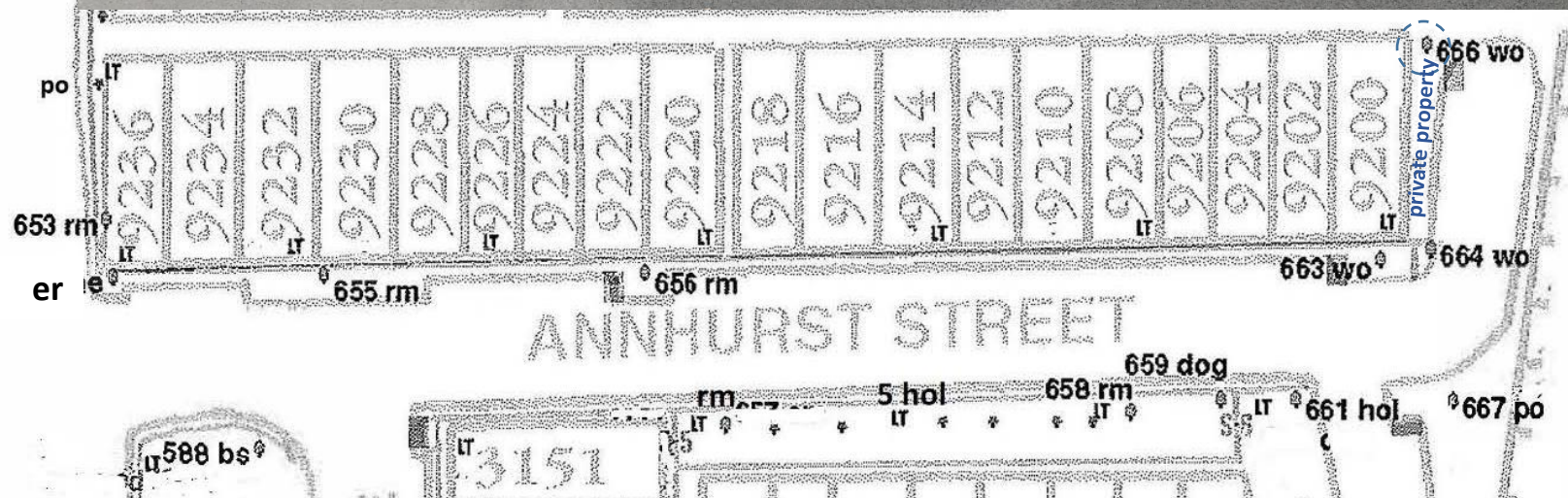


Replace invasive and overgrown shrubs and groundcover on slope facing Annhurst with Carolina allspice / sweetshrub and gro-low sumac (see insets)

Plantings on slope

16 trees:

- 1 Dog = dogwood
- 1 Er = eastern redbud
- 5 Hol =Nellie Stevens holly
- 1 Po = pin oak
- 5 Rm = red maple
- 3 Wo = willow oak

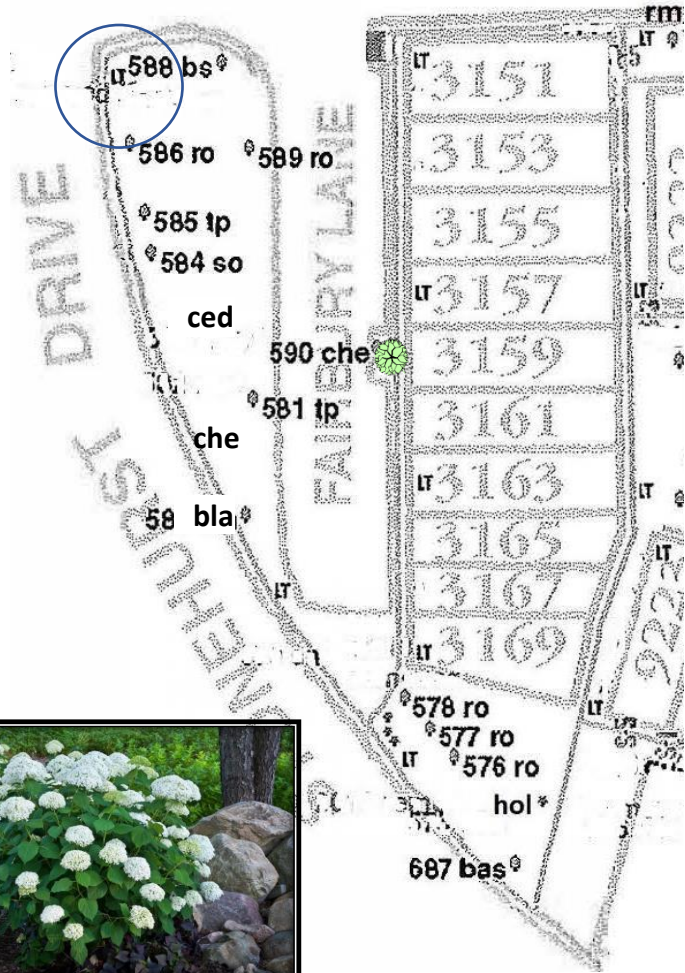


Calycanthus floridus
6-10'



Rhus aromatica
1.5-2'

FAIRBURY LANE (10 HOMES)



Planting bed by 3151 (Japanese holly); add native hydrangea (see inset), cedar, and Japanese cherry tree near little library (non-native favorite), and juniper on slope facing 3155

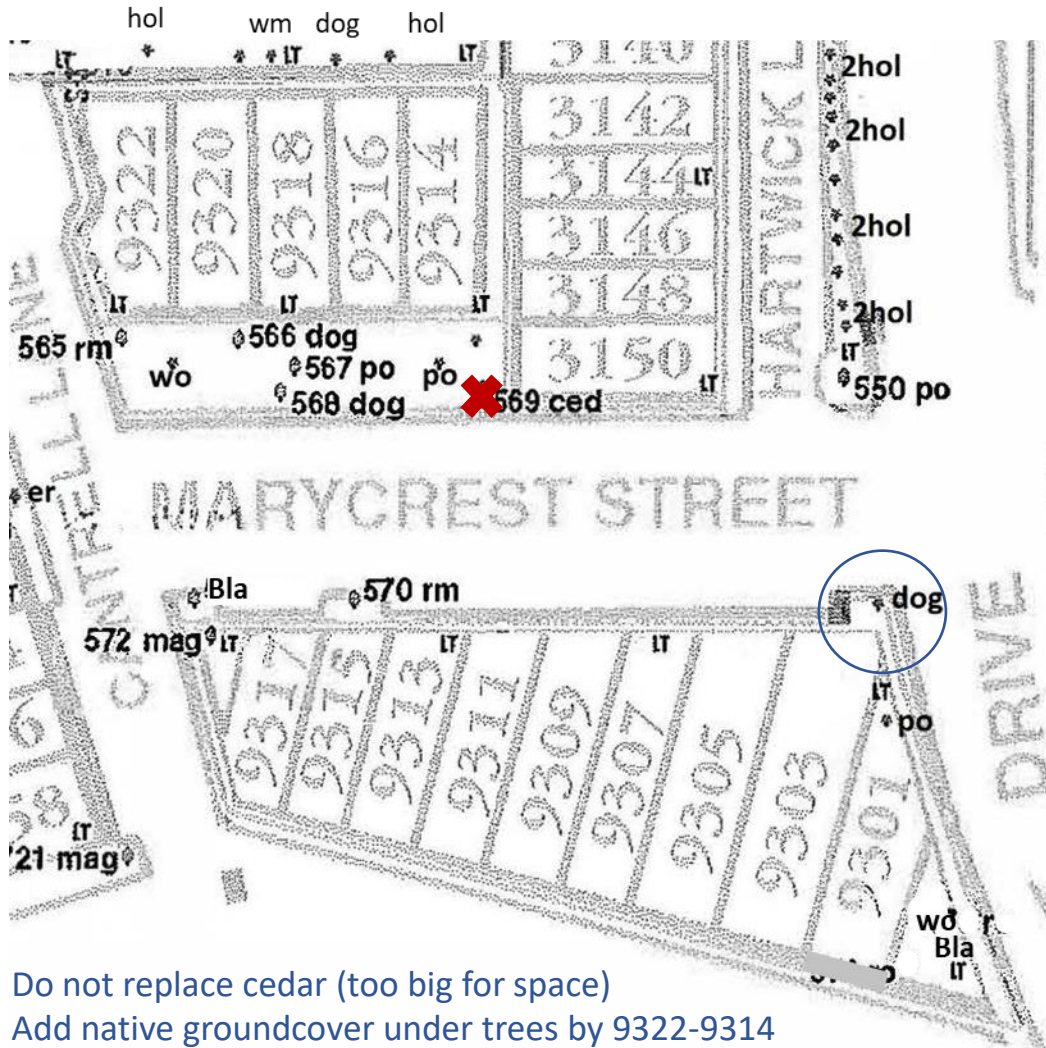
14 trees: 1 Bas = basswood/linden; 1 bla = blackgum; 1 Bs = blue spruce; 1 ced = blue atlas cedar, 1 Che = cherry; 1 hol = holly; 5 Ro = red oak; 1 So = scarlet oak; 2 Tp = tulip poplar

Replace cherry removed in 2023



Hydrangea arborescens
4-6'

MARYCREST STREET (14 HOMES)



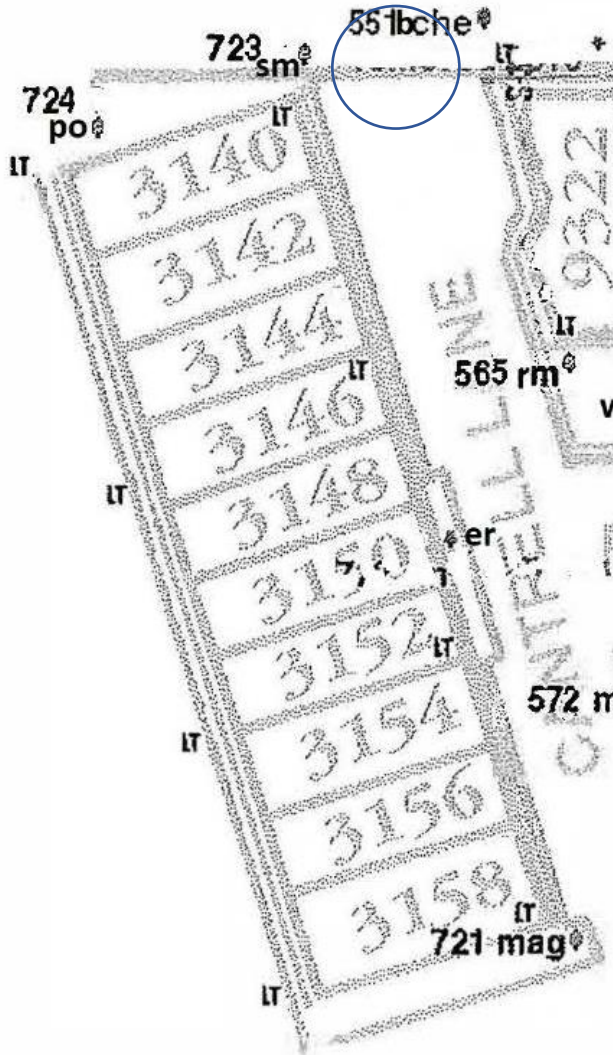
Do not replace cedar (too big for space)
 Add native groundcover under trees by 9322-9314



Planting bed by 9303 (non-native roses)

18 trees: 2 bla = blackgum; 1 Ced = cedar; 4 Dog = dogwood; 2 hol=holly, 1 Mag = Southern Magnolia; 1 wm=White Mulberry, 3 Po = pin oak; 2 Rm = red Maple; 2 wo=willow oak

CANTRELL LANE (10 HOMES)

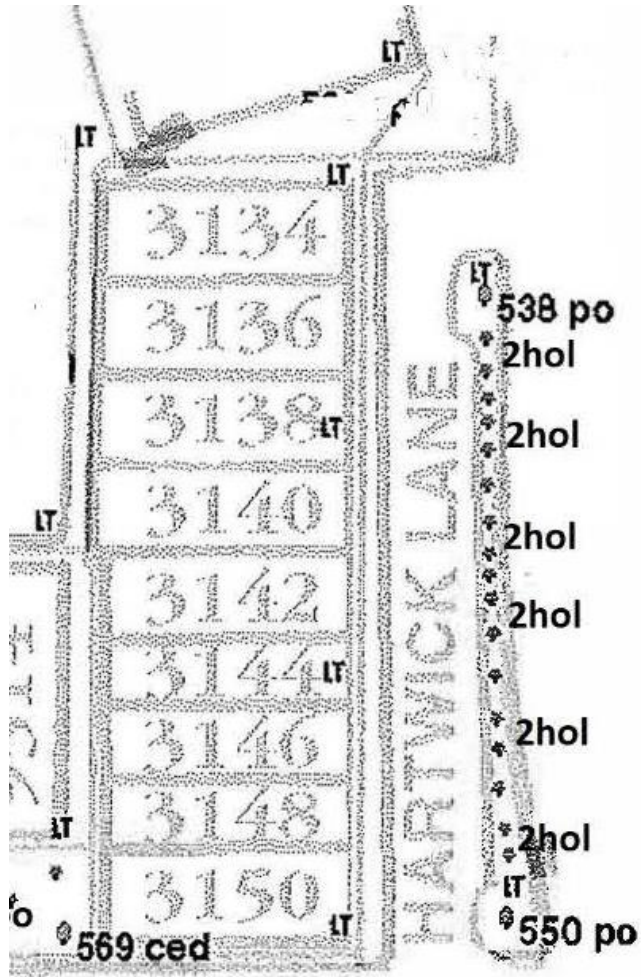


Planting bed by 3140 (non-native forsythia)

5 trees: 1 bche = black cherry; 1 er=eastern redbud; 1 mag = southern magnolia; 1 po = pin oak; 1 sm = sugar maple

Maintain

HARTWICK LANE (9 HOMES)



No planting bed

19 trees/tall shrubs: 5 non-native crape myrtle; 12 Nellie Stevens holly;
2 Po = pin oak

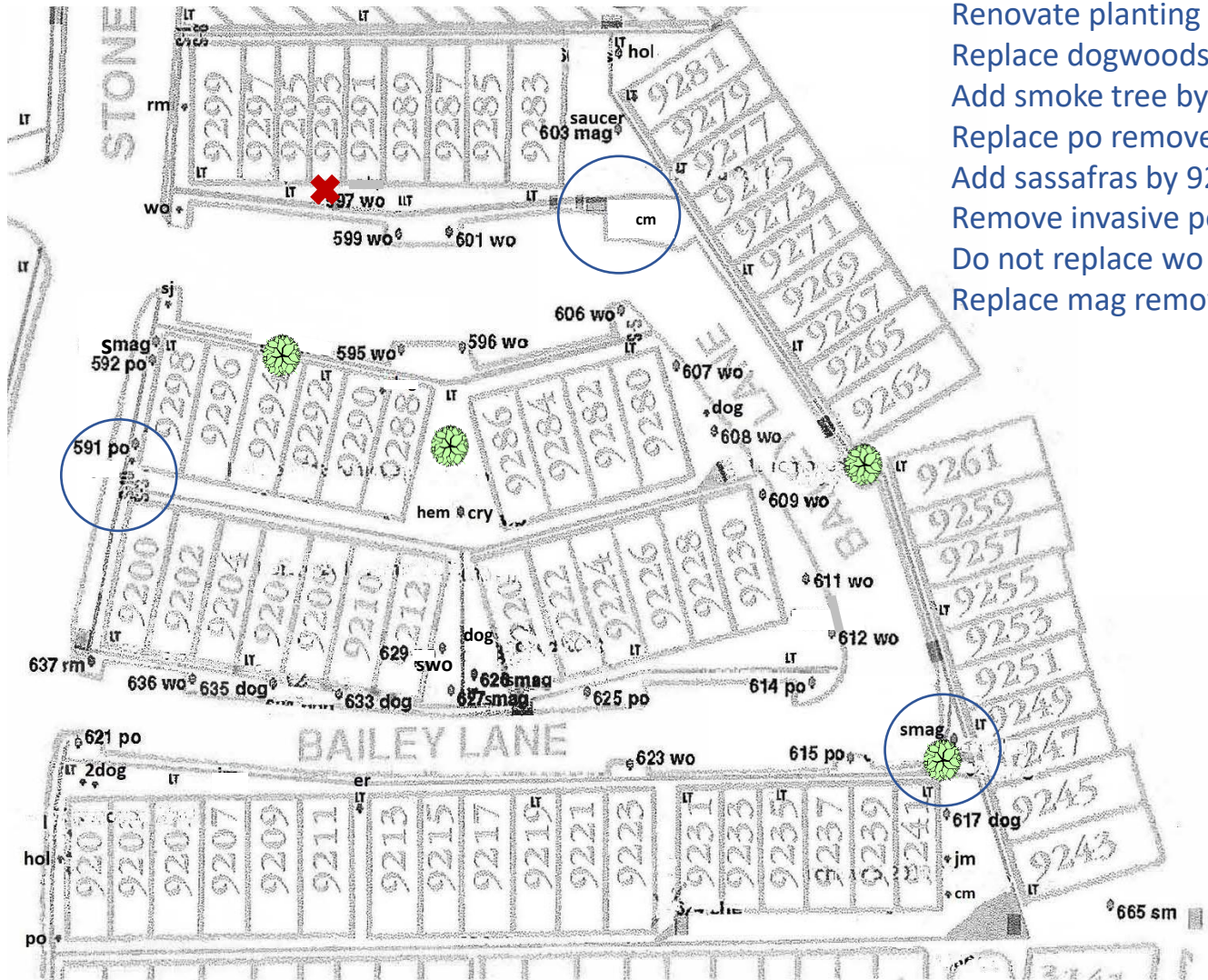
Maintain

SHA III

SHA III includes Bailey, Barnard, and Clanbrook (112 homes). It also includes ~1.5 acres of RPA behind Bailey.



BAILEY LANE (70 HOMES)



- Renovate planting beds
- Replace dogwoods by 9206-10 w/sourwood
- Add smoke tree by 9241
- Replace po removed 2009 by 9261 (on hold)
- Add sassafras by 9288 (too bare)
- Remove invasive pear behind 9292
- Do not replace wo by 9293 (too big for space)
- Replace mag removed 2021 by 9294 w/dog

Planting beds by 9241, 9283, and 9298

45 trees/tall shrubs:

- 2 Cm = Crape Myrtle
- 1 Cry = Cryptomeria
- 6 Dog = dogwood
- 1 Eh = Eastern Hemlock
- 1 er = Eastern Redbud
- 2 Hol = Holly
- 1 jm = japanese maple
- 7 Po = pin oak
- 2 Rm = red maple
- 1 sj = japanese snowbell
- 5 Smag = 2 star, 1 saucer, 2 sweetbay magnolia
- 1 Sm = sugar maple
- 1 swo = swamp white oak
- 14 Wo = willow oak

BEDS BY 9283, 9241 BAILEY



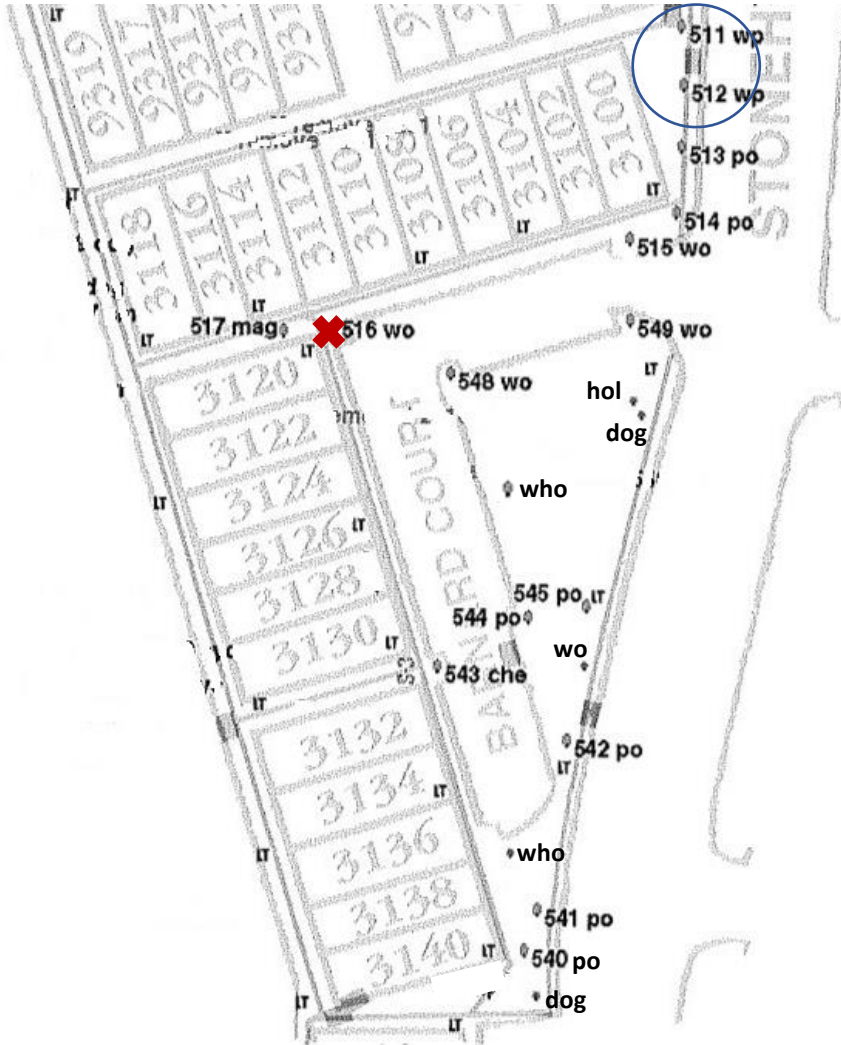
Physocarpus opulifolius
Tiny Wine 3-4'

Remove invasives, create complementary beds with magnolia, holly or juniper, ninebark, roses or hydrangea (see insets), and native grasses



Hydrangea quercifolia
3.5 x 5'

BARNARD COURT (21 HOMES)



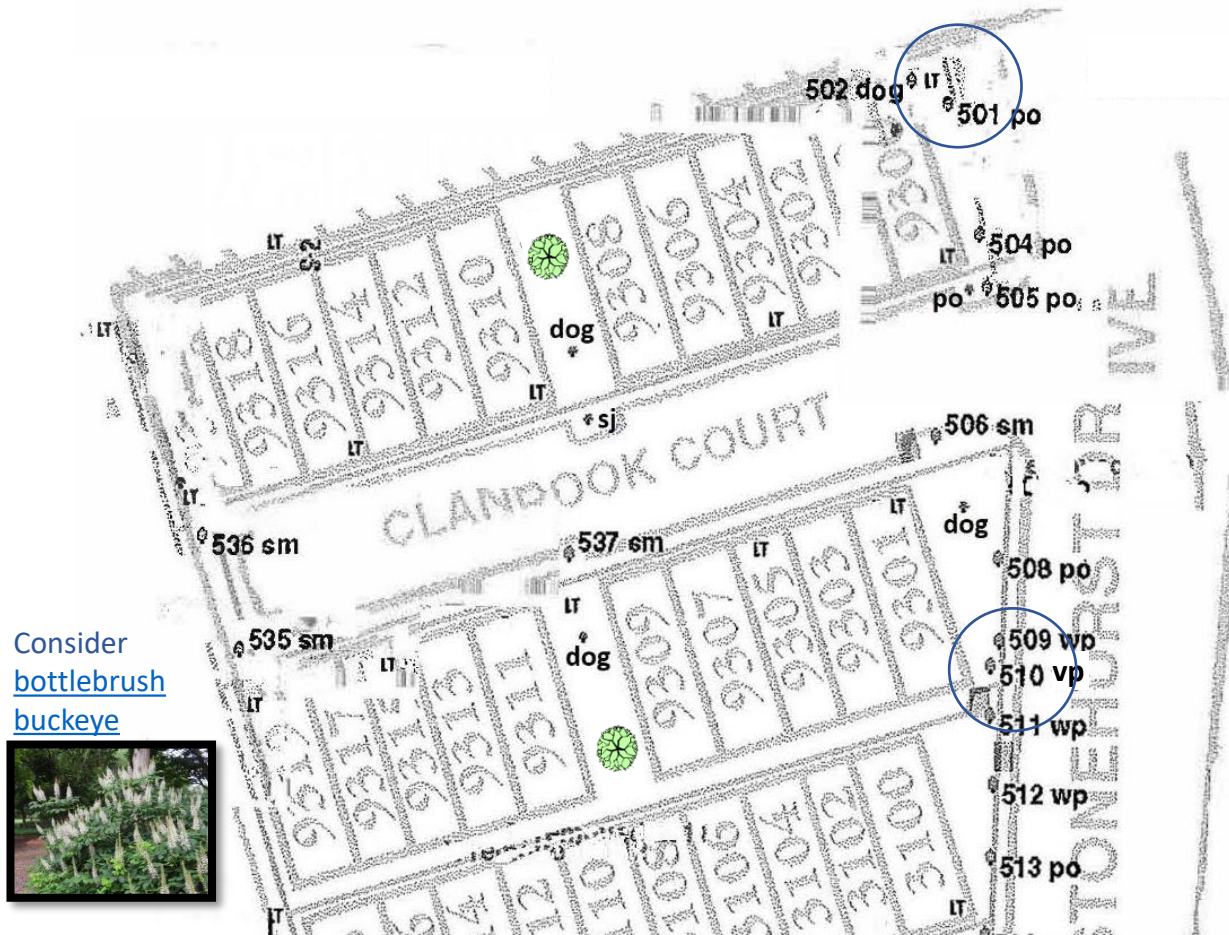
Hamamelis virginiana
15-20'

Planting bed by 3100 and 9301 Clanbrook (pines), add witch hazel (see inset)

20 trees: 1 Che= cherry; 2 Dog= dogwood; 1 hol= holly; 1 Mag= southern magnolia; 7 Po= pin oak; 2 who= white oak; 4 Wo= willow oak; 2 Wp= white pine

Replace dying willow oak with smaller tree suited to conditions

CLANBROOK COURT (21 HOMES)



Consider
[bottlebrush](#)
[buckeye](#)



Planting bed by 9300 (native rhododendron, roses, replace invasive daylilies); [add witch hazel by 9301](#)

16 trees: 4 Dog=dogwood; 1 sj = Japanese Snowbell; 5 Po=pin oak; 4 Sm = sugar maple; 1 vp = Virginia pine; 2 Wp = white pine



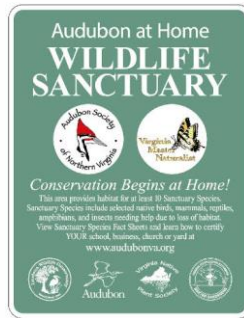
SHA RECREATION SITE

SHA Recreation Site consists of ~1.5 acres behind Bailey. It also includes ~0.7 acres of RPA below the dropoff.

THE GROVE

STONEHURST DRIVE

Natural regeneration is in progress following MetroRow development in 2016 and volunteer projects. SHA will remove the worst invasives every few years.



The Grove: blackhaw viburnum; bleeding hearts; blue lobelia, catawba rhododendron; ferns; flag iris; indigobush; juniper 'grey owl'; lambs ears, oakleaf hydrangea; painter's palette; peonies; smokebush; thicketleaf phlox; weeping dwarf japanese maple; and witch hazel

13 trees: 1 asp = aspen; 1 bche = black cherry; 7 bl=black locust; 1 che=cherry; 2 japanese maple; 1 tp = tulip poplar

An aerial photograph of a residential neighborhood. In the upper left, there is a large, multi-story brick apartment building with a parking lot. The rest of the area is filled with dense green trees and several smaller, two-story brick houses. A semi-transparent white box with a thin black border is overlaid on the center of the image, containing text.

RESOURCE PROTECTION AREA

SHA common property includes ~4.2 acres of RPA (shaded green on the SHA maps).

INVASIVE CONTROL PLAN

- Resource Protection Areas (RPAs) are regulated corridors within 100 feet of the shorelines of waterways that drain into the Potomac River and Chesapeake Bay.
- In their natural condition, RPAs protect water quality, filter pollutants, prevent erosion, and provide habitat.
- **SHA owns land behind Lindenwood and Bailey, up to the stream bank in some places.** The RPA is full of vines and other invasives that are smothering and killing the natives, including large canopy trees.
- In 2023, the SHA Board approved an **invasive control plan**.
 - Changes to structures and vegetation in the RPA are regulated by [Fairfax County](#).
 - Beginning in 2023, Fairfax County will enforce a new ordinance with fines for failure to control running bamboo ([fairfaxcounty.gov](#)).



Porcelain-berry vine



Running bamboo

COMPLETED PROJECTS

ENTRANCE

4 TREES: blackgum, 2 holly, sugar maple

CENTER MEDIANS

Replace nandina – inkberry holly

Dwarf boxwood edging

Fill with perennials (full sun):

daffodils, coreopsis, hidcote lavender

carpet roses, lambs ears

LEFT AND RIGHT BEDS (front only)

Replace japanese holly - yellow twig dogwood

Replace annuals – purple love grass



Yellow twig dogwood
Cornus sericea 'Flaviramea'
5-6'



Dwarf boxwood
Buxus sempervirens
2-3'



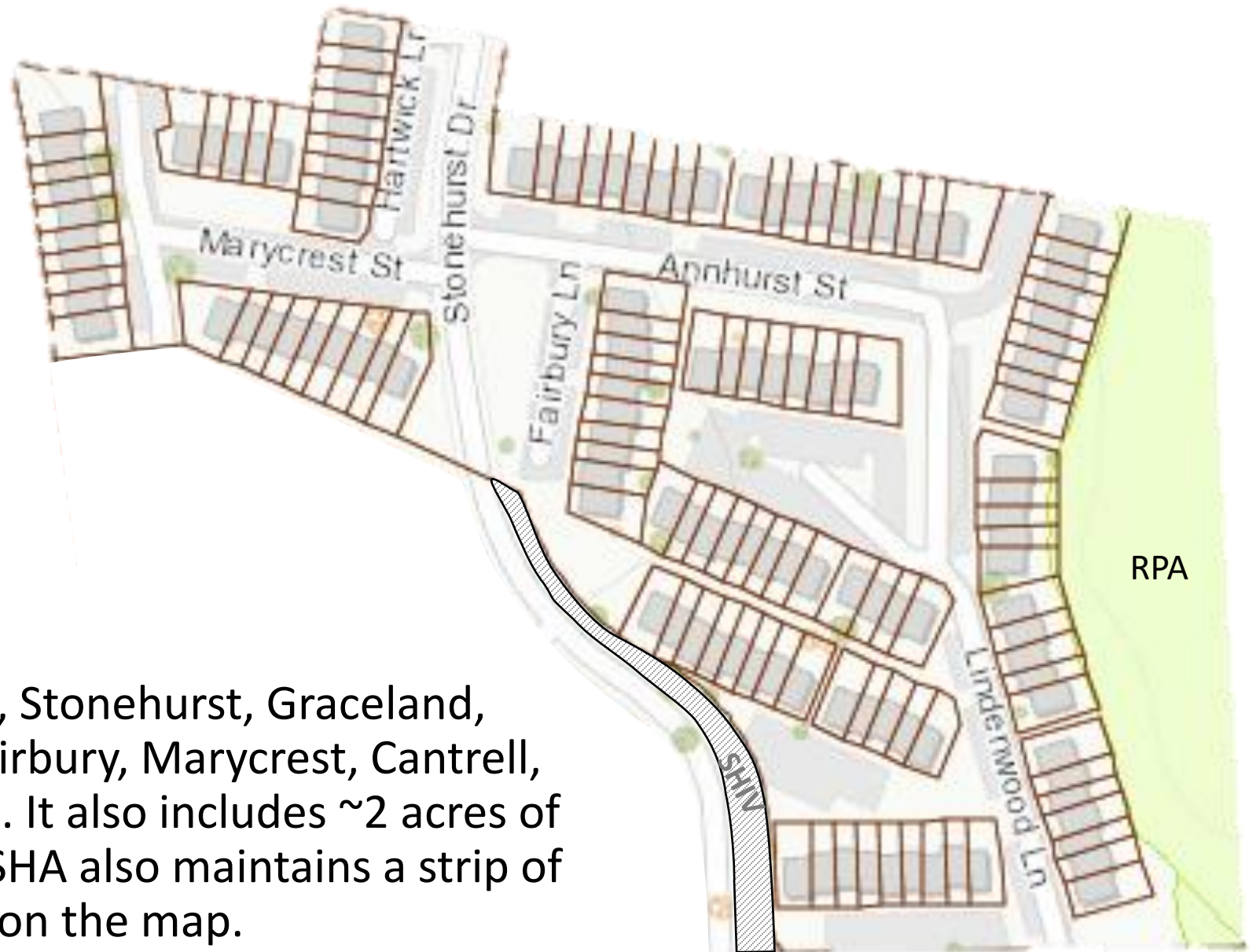
Compact Inkberry holly
Ilex glabra 'compacta'
4-6'



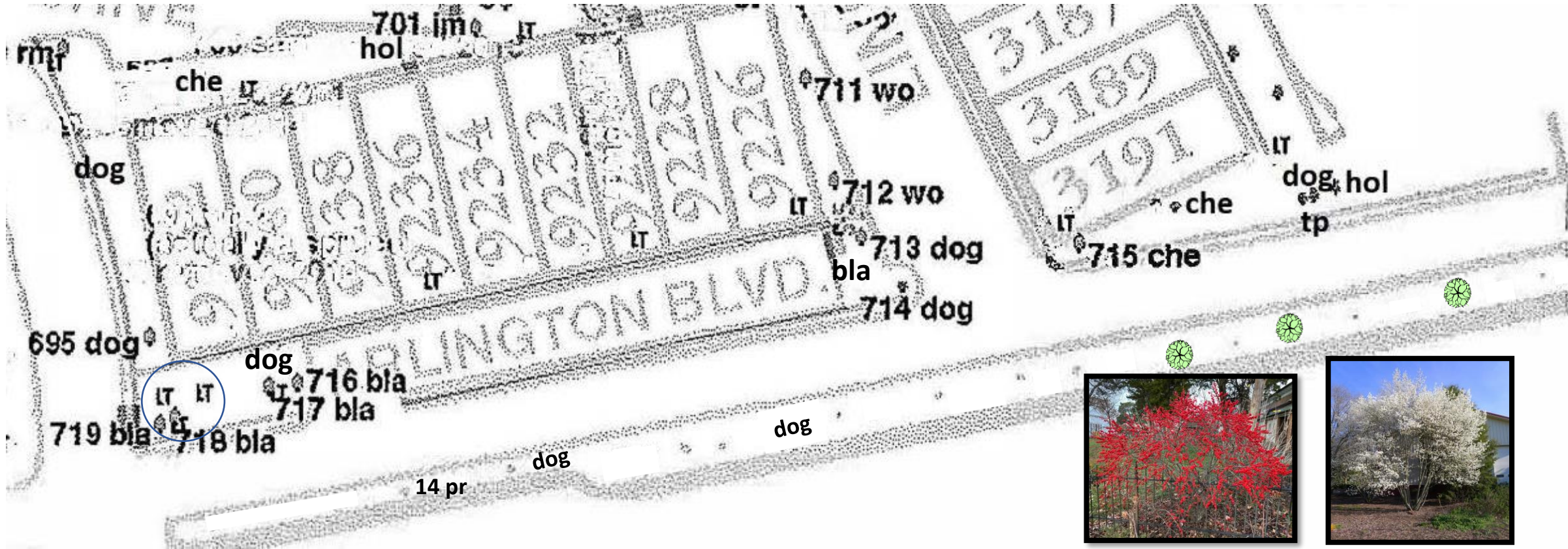
Purple love grass
Eragrostis spectabilis
1-2'

SHA I/II

SHA I/II includes Arlington, Stonehurst, Graceland, Lindenwood, Annhurst, Fairbury, Marycrest, Cantrell, and Hartwick (130 homes). It also includes ~2 acres of RPA behind Lindenwood. SHA also maintains a strip of SHIV common area noted on the map.



ARLINGTON BOULEVARD (9 HOMES)



12 trees: 5 Bla = blackgum; 5 Dog = dogwood; 2 Wo = willow oak

16 trees in Route 50 median: 2 dogwood, 14 invasive pr=pear; **replace with holly, pine, and [serviceberry](#) (see inset)**

underplant trees in median with winterberry (see inset) and sweetspire for screening



Ilex verticillata
6-12'



Amelanchier laevis
15-40'

BED BY 9242 ARLINGTON



Hydrangea arborescens
4-6'

Replace overgrown holly, viburnum, and ivy with native holly, yellow twig dogwood, smooth hydrangea, and Appalachian sedge (see insets)



Carex appalachia
0-1'

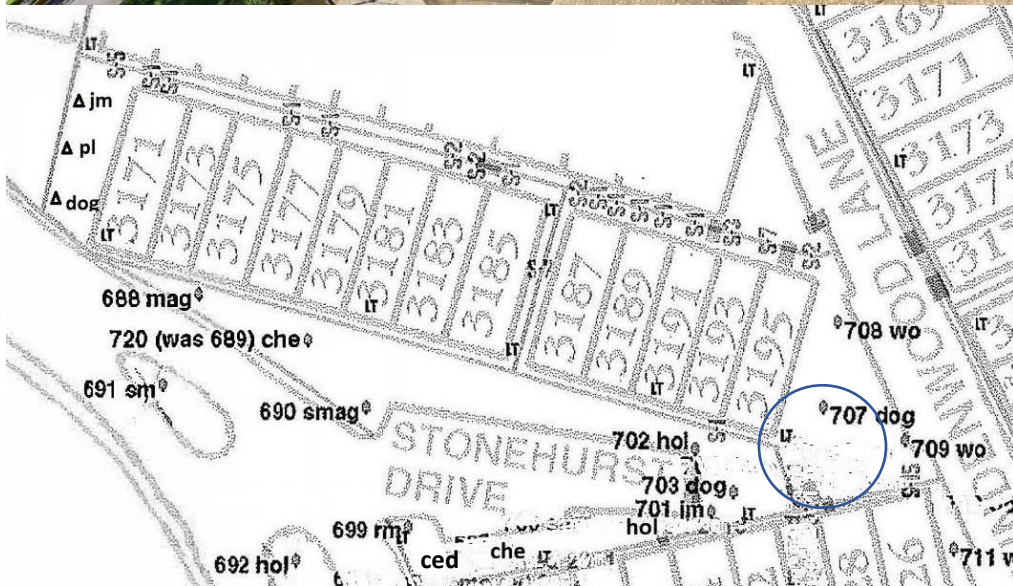
STONEHURST DRIVE (13 HOMES)



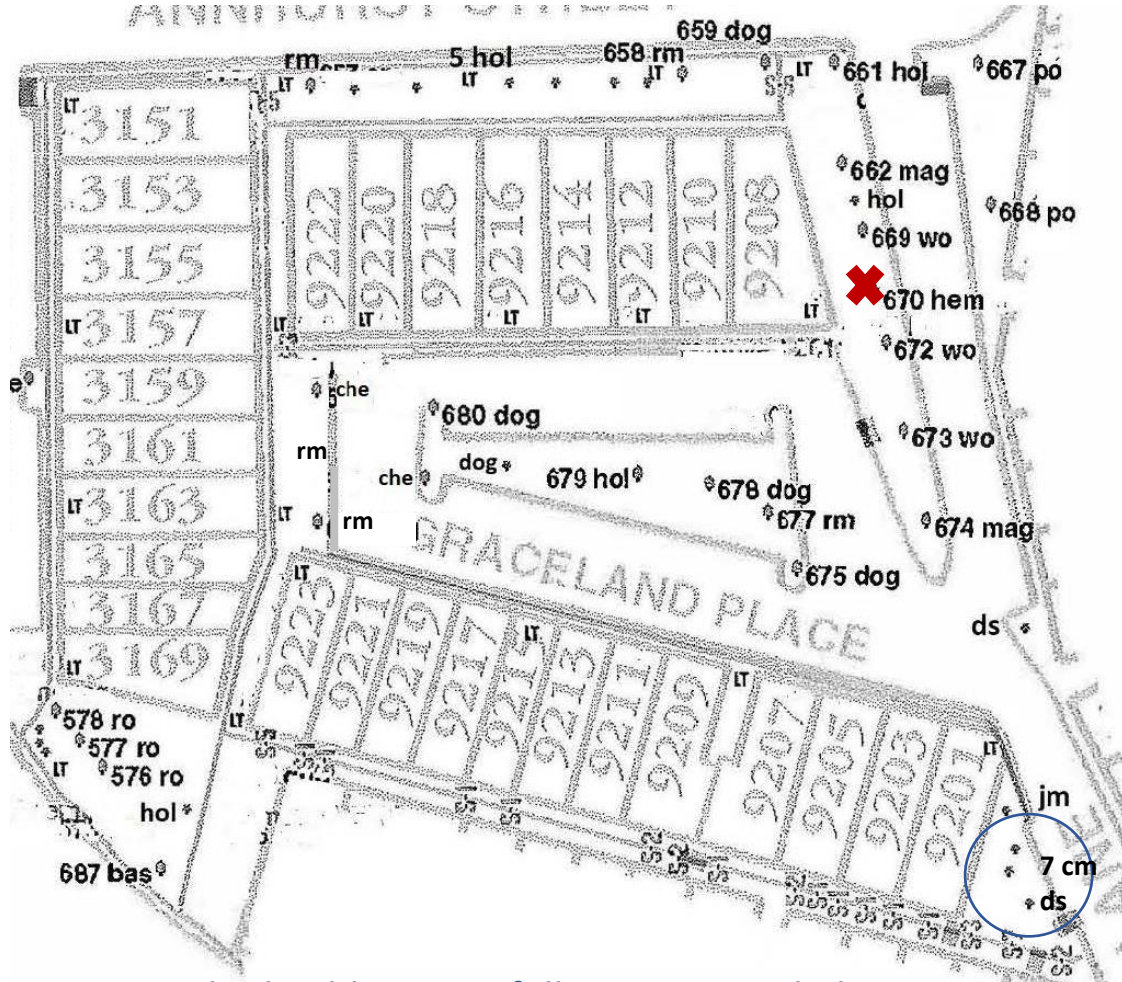
Planting bed by 3195 (azalea, forsythia, hosta, spirea, groundcover; added spicebush, mapleleaf viburnum)

Planting boxes behind 3193/95 (shrubs, ferns, hosta, removed invasive porcelain-berry vine, added juniper)

16 trees: 1 ced = eastern redcedar; 2 Che = cherry; 3 Dog = dogwood; 2 Hol = holly; 2 Jm = japanese maple; 1 Plum; 1 Rm = red maple; 2 Smag = saucer magnolia; 2 Wo = willow oak



GRACELAND PLACE (20 HOMES)



Renovate bed, add trees in full sun areas to balance canopy, do not plant trees in small ends of parking island



27 trees: 2 Che = cherry; 7 cm = crape myrtle; 4 Dog = dogwood; 1 ds = downy serviceberry; 1 Hem = hemlock; 3 Hol = holly; 1 jm = japanese maple; 2 Mag = southern magnolia; 3 Rm = red maple; 3 Wo = willow oak

BED BY 9201 GRACELAND: DESIGN

Replace some of the crape myrtle with native serviceberry and summer sweet, add creeping juniper within 8' of curb and left edge and reduce invasive daylilies (which do control erosion)



Amelanchier arborea
15-25'

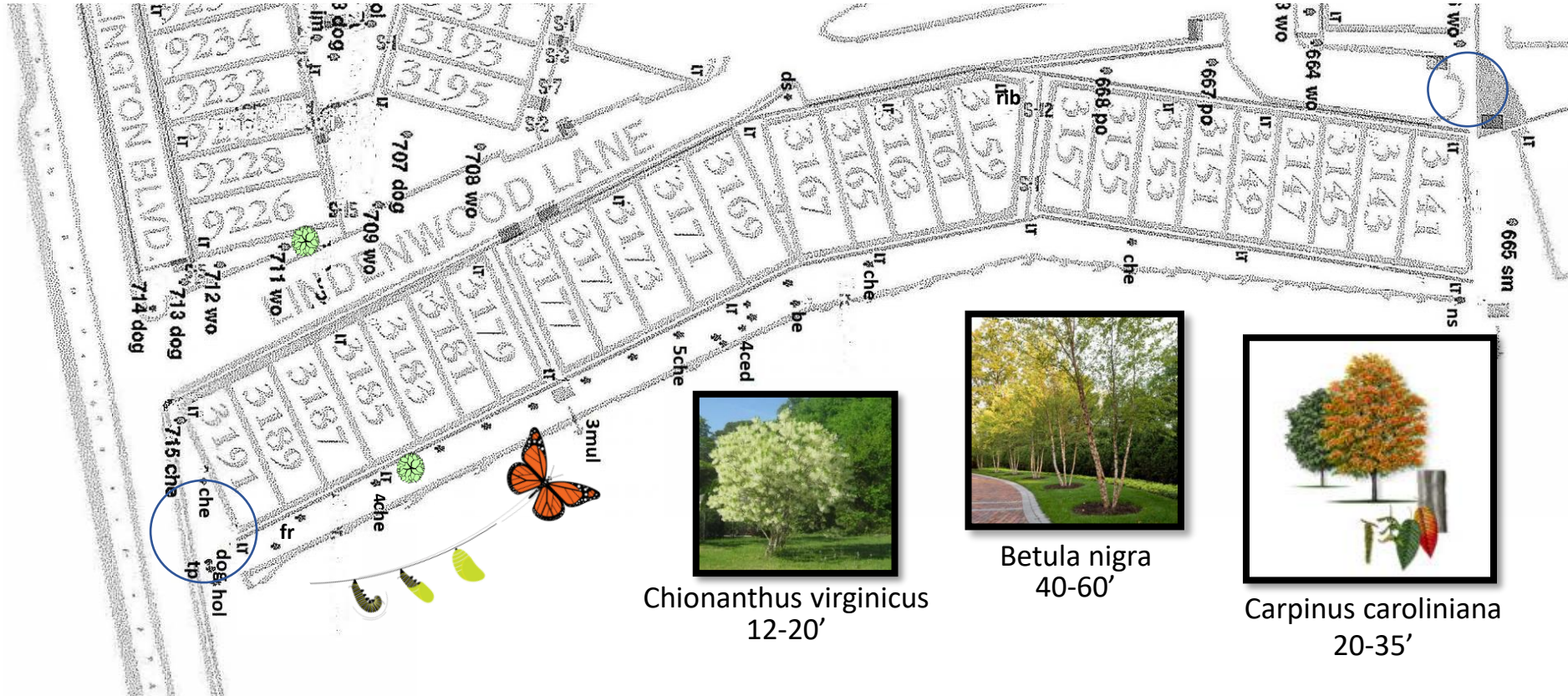


Juniperus horizontalis
'Wiltonii' 6"



Clethra alnifolia
'Ruby Spice' 4-6'

LINDENWOOD LANE (26 HOMES)



planting beds by 3191, 3141, and rear sidewalk

30 trees:

- 1 be = Boxelder
- 4 ced = white cedar
- 13 Che = cherry
- 1 dog = dogwood
- 1 ds = downy serviceberry
- 1 fr = fringe tree
- 1 Hol = holly
- 3 wm = White Mulberry
- 1 ns = Norway Spruce
- 2 Po = pin oak
- 1 Rib = river birch
- 1 tp = Tulip poplar

Improve planting beds; replace pin oaks when dead with birch or dogwood, replace japanese cherries by rear sidewalk/RPA when dead with fringe tree or hornbeam (see insets), spicebush, and small perennials for a [butterfly way station](#)

BEDS BY 3191, 3141 LINDENWOOD



Rhododendron maximum
5-15'

Remove ivy, add juniper, rhododendron
(set inset) and native groundcovers



Cephalanthus occidentalis
5-12'

Renovate with buttonbush (see inset)
little blue stem, and creeping phlox